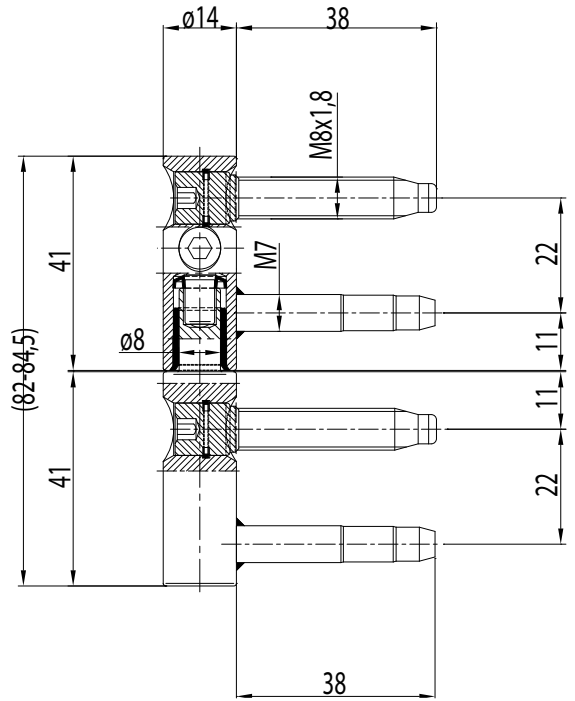
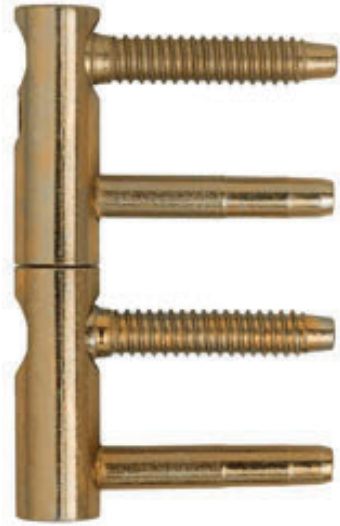


HR01

CERNIERA REGOLABILE 4P D14 H82-86 L38
 ADJUSTABLE HINGE 4P D14 H82-86 L38



CARATTERISTICHE / FEATURES

Cerniere a vite a 4 perni registrabili in 3 dimensioni (verticale, orizzontale, in pressione) diametro 14 mm per porte e finestre in legno per applicazione a battente e a filo.
 Four pins screw-in adjustable in 3 dimensions (vertical, horizontal, in pressure) hinges diameter 14 mm for timber doors and windows for rebated or flush application.

PORTATA MAX LOAD	Ø CORPO Ø BODY.	H. CORPO L. GAMBI BODY H - STEMS L	Ø GAMBI Ø STEMS	REGOLABILE ADJUSTABLE	MATERIALE MATERIAL
45 Kg 3 cerniere 3 hinges	14 mm	82-86 mm 38 mm	M8 - 7 mm	Si, in altezza Yes, in height Si, in profondità Yes in depth	Acciaio Steel

FINITURE / FINISHINGS

Zincato Bianco
White Zinc

Zinco Tropical
Tropical Zinc